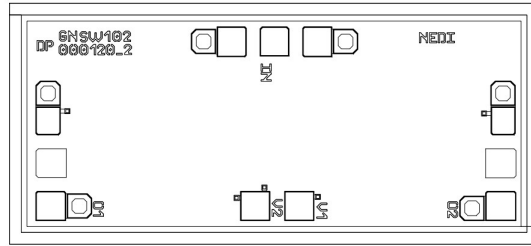


Performance

- Frequency: DC-18GHz
- Insertion loss: 1.5dB
- Isolation: 35dB
- Input P-0.3: 44dB
- VSWR_{IN/OUT}: 1.8:1
- Switching Time: 20ns
- Control Voltage: 0/-40V
- Reflective Design
- Chip size: 1.8*0.82*0.08mm

Function Diagram

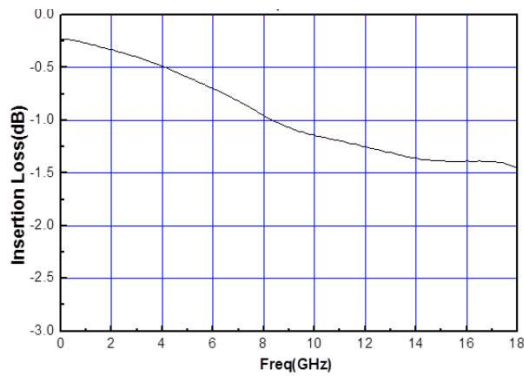


Electrical Specifications (Ta=+25°C, Vc=-40V)

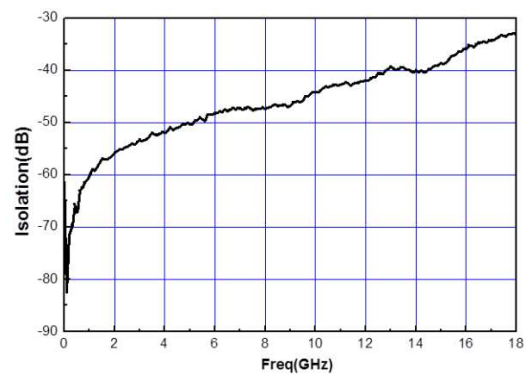
Parameter	Min	Typical	Max	Unit
Frequency Range	DC-18			GHz
Insertion Loss (Li)	-	1.5	-	dB
Isolation (ISO)	30	35	-	dB
Input /Output VSWR (VSWR)	-	1.8	-	

Test Curves (Ta=+25°C)

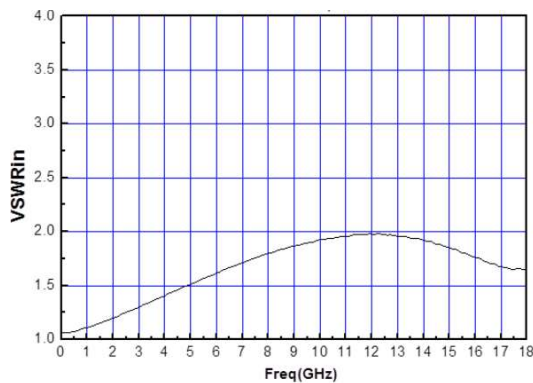
Insertion Loss vs. Freq



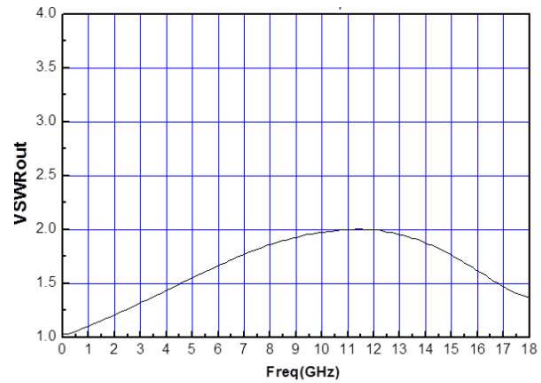
Isolation vs. Freq



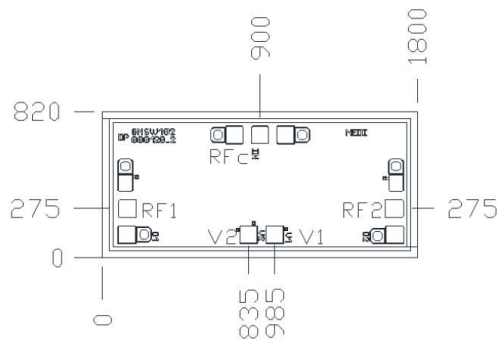
VSWRin vs. Freq



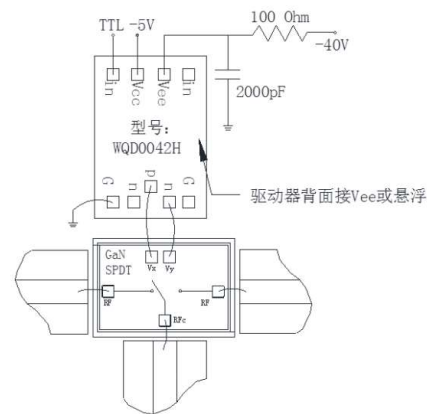
VSWRout vs. Freq



Outline Size (μm)



Assembly Diagram



Absolute Maximum Ratings

Symbol	Parameter	Value	Notes
V1,2	Control Voltage	-60V	
P _{cw}	Input Continuous Wave Power	45dBm	
T _{ch}	Max. Channel Temperature	225°C	
T _{stg}	Storage Temperature	-55~150°C	
T _m	Mounting Temperature	300°C	1min, N ₂ protection

Any of the stresses above the listed ratings may cause permanent damage.

Truth Table

V1	V2	RFin→RFout1	RFin→RFout2
-28V~-40V	0V~0.5V	ON	OFF
0V~0.5V	-28V~-40V	OFF	ON