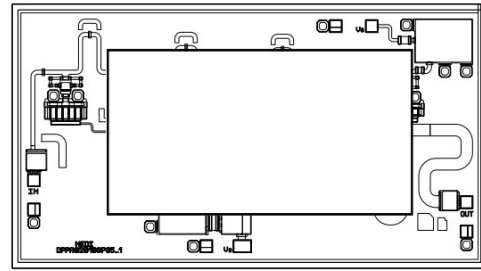


Performance

- Frequency: DC-6GHz
- Insertion loss: 1.2dB
- Isolation: 40dB
- Input P-0.3: 48dBm
- Input/Output VSWR: 1.3:1
- Switching Time: 20ns
- Control Mode: 0/-40V
- Voltage Control, SPDT Reflective
- Chip size: 1.8*0.9*0.08mm

Function Diagram



Electrical Specifications (Ta=+25°C, V1,V2=0V/-40V)

| Parameter | Min | Typical | Max | Unit |
|---------------------------|------|---------|-----|------|
| Frequency Range | DC-6 | | | GHz |
| Insertion Loss (Li) | - | 1.1 | - | dB |
| Isolation (ISO) | - | 40 | - | dB |
| Input /Output VSWR (VSWR) | - | 1.2 | - | |

Absolute Maximum Ratings

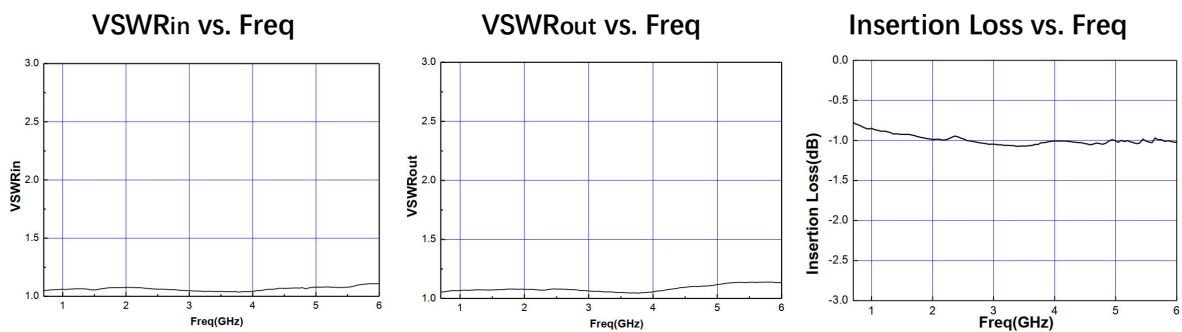
| Symbol | Parameter | Value | Notes |
|--------|-----------------------------|-----------|---------------------|
| V1,2 | Control Voltage | -60V | |
| Pcw | Input Continuous Wave Power | 49dBm | |
| Tch | Channel Temperature | 225°C | |
| Tstg | Storage Temperature | -55~150°C | |
| Tm | Mounting Temperature | 310°C | 1min, N2 protection |

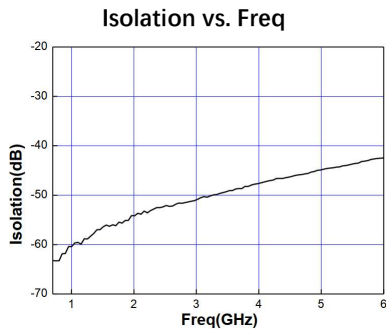
Any of the stresses above the listed ratings may cause permanent damage.

Truth Table

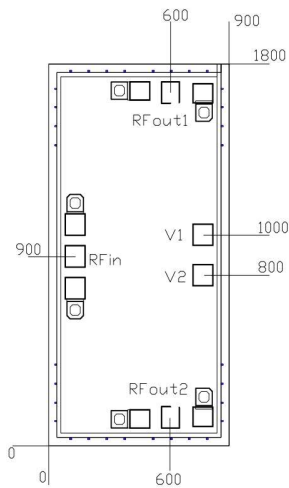
| V1 | V2 | RFin→RFout1 | RFin→RFout2 |
|------|------|-------------|-------------|
| -40V | 0V | ON | OF |
| 0 | -40V | OFF | ON |

Test Curves (Ta=+25°C, (V1,2=-40V))

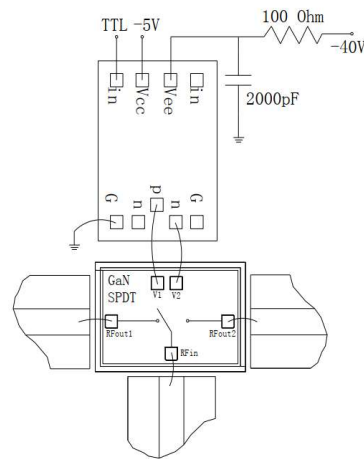




Outline Size (μm)



Assembly Diagram



PIN Definition

| PIN | Description |
|---------|-------------------------|
| RF1、RF2 | RF ports, 50Ω |
| RFc | Common, 50Ω |
| V1、V2 | Control Ports |
| GND | Bottom must be grounded |