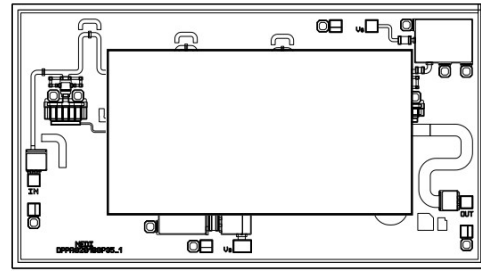


Performance

- Frequency: DC-6GHz
- Insertion loss: 0.8dB
- Isolation: 38dB
- Input P-0.3: 48dBm
- Input/Output VSWR: 1.5:1
- Switching Time: 20ns
- Control Mode: 0/-40V
- Voltage Control, SPDT Reflective
- Chip size: 1.6*0.85*0.08mm

Function Diagram

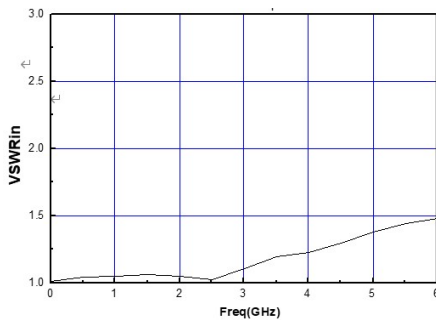


Electrical Specifications (Ta=+25°C, V1,V2=0V/-40V)

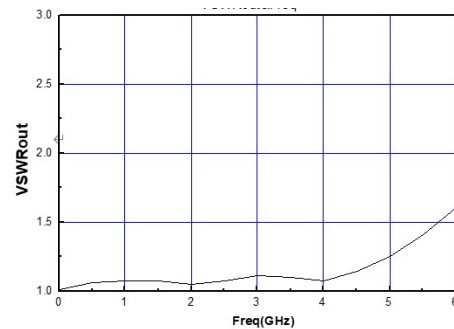
Parameter	Min	Typical	Max	Unit
Frequency Range	DC-6			GHz
Insertion Loss (Li)	-	0.8	-	dB
Isolation (ISO)	-	38	-	dB
Input /Output VSWR (VSWR)	-	1.5	-	

Test Curves (Ta=+25°C, (V1,2=-40V))

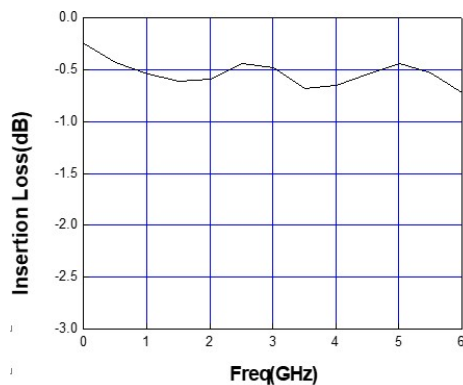
VSWRin vs. Freq



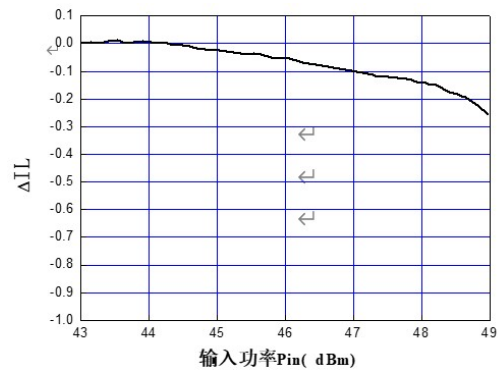
VSWRout vs. Freq



Insertion Loss vs. Freq



Input Power (3GHz)



Absolute Maximum Ratings

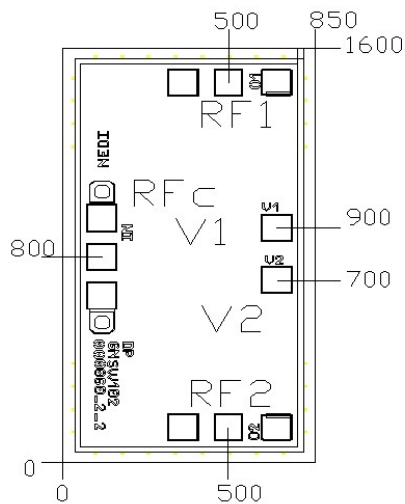
Symbol	Parameter	Value	Notes
V1,2	Control Voltage	-60V	
P _{cw}	Input Continuous Wave Power	49dBm	
T _{ch}	Channel Temperature	225°C	
T _{stg}	Storage Temperature	-55~150°C	
T _m	Mounting Temperature	310°C	1min, N ₂ protection

Any of the stresses above the listed ratings may cause permanent damage.

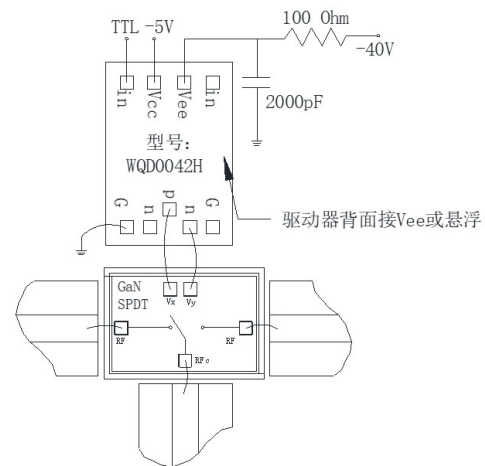
Truth Table

V1	V2	RF _{in} →RF _{out1}	RF _{in} →RF _{out2}
-28V~-40V	0V~0.5V	ON	OFF
0V~0.5V	-28V~-40V	OFF	ON

Outline Size



Assembly Diagram



PIN Definition

PIN	Description
RF1、RF2	RF ports, 50Ω
RFc	Common, 50Ω
V1、V2	Control Ports
GND	Bottom must be grounded