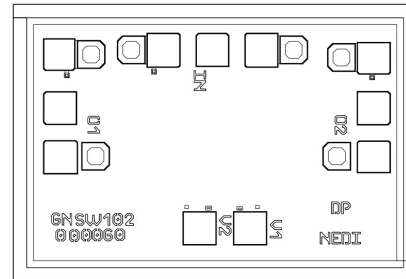


### Performance

- Frequency: DC-7GHz
- Insertion loss: 0.4dB
- Isolation: 38dB
- Input P-0.3: 46dB
- VSWR<sub>IN/OUT</sub>: 1.2:1
- Switching time: 20ns
- Control Voltage: 0/-40V
- SPDT Reflective Design
- Chip size: 1.2\*0.82\*0.08mm

### Function Diagram

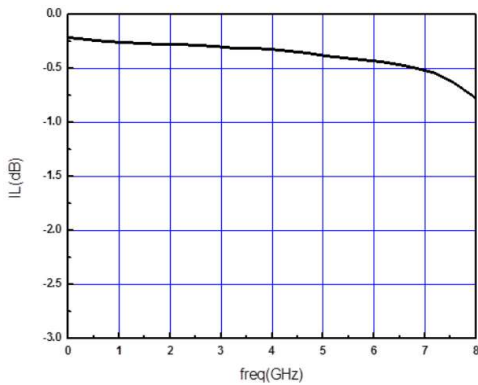


### Electrical Specifications (Ta=+25°C, V1,V2=0V/-40V)

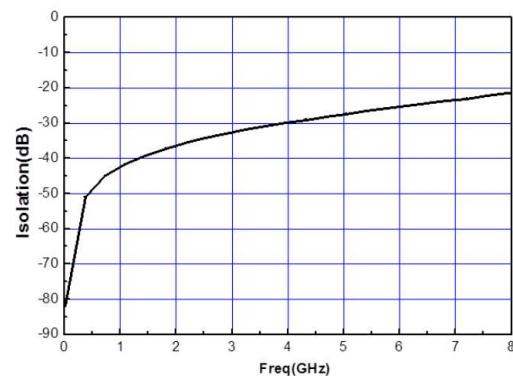
Parameter	Min	Typical	Max	Unit
Frequency Range	DC-7			GHz
Insertion Loss (Li)		0.4		dB
Isolation (ISO)		30		dB
Input /Output VSWR (VSWR)		1.2		

### Test Curves

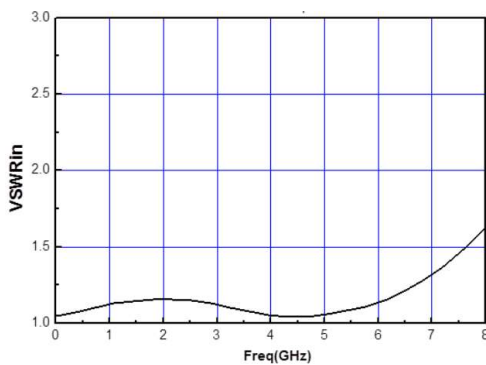
Insertion Loss vs. Freq



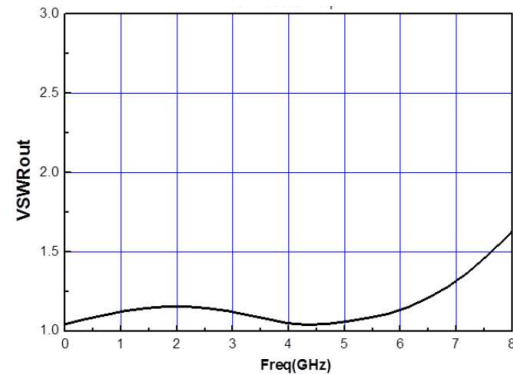
Isolation vs. Freq



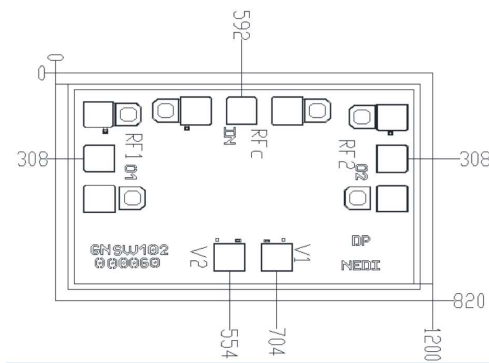
VSWRin vs. Freq



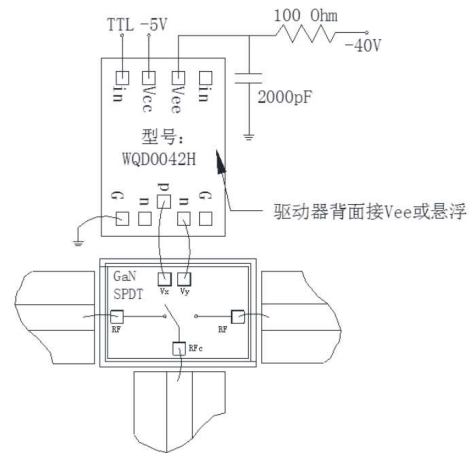
VSWRout vs. Freq



### Outline Size (μm)



### Assembly Diagram



### PIN Description

Pin	Description
RF1, RF2	RF Signal, connect to 50Ω system
V1, V2	Control Voltage
RFc	Common, connect to 50Ω system
GND	Ground

### Absolute Maximum Ratings

Symbol	Parameter	Value	Notes
V1,2	Control Voltage	-60V	
P <sub>cw</sub>	Input Continuous Wave Power	47dBm	
T <sub>ch</sub>	Max. Channel Temperature	225°C	
T <sub>stg</sub>	Storage Temperature	-55~150°C	
T <sub>m</sub>	Mounting Temperature	300°C	1min, N <sub>2</sub> protection

Any of the stresses above the listed ratings may cause permanent damage.

### Truth Table

V1	V2	RF <sub>in</sub> →RF <sub>out1</sub>	RF <sub>in</sub> →RF <sub>out2</sub>
-28V~-40V	0V~0.5V	OFF	ON
0V~0.5V	-28V~-40V	ON	OFF