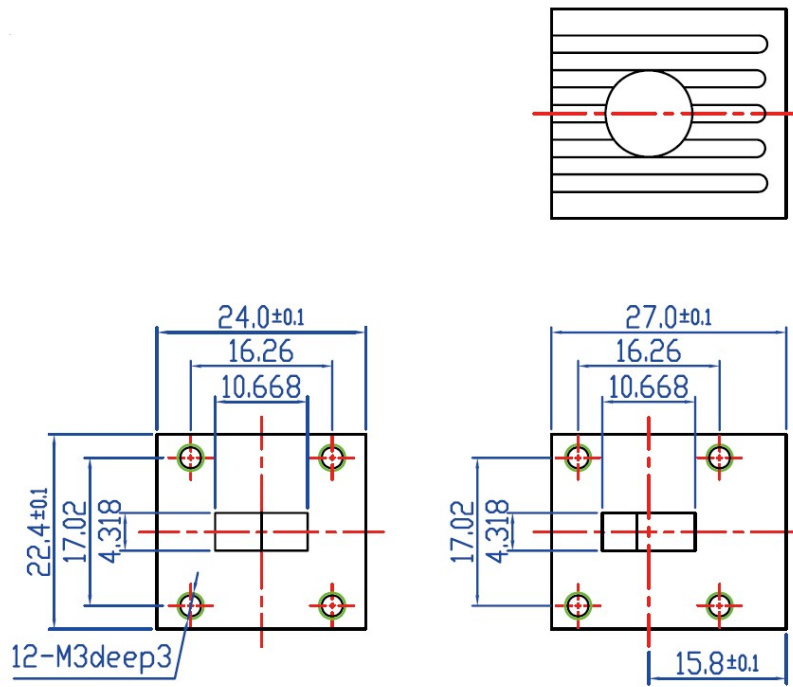


**Electrical Specifications** ( $T_A = +25^\circ\text{C}$ )

| Parameter             | Specification | Unit             |
|-----------------------|---------------|------------------|
| Suitable Frequency    | 17.6-26.7     | GHz              |
| Relative Bandwidth    | 5%            | -                |
| Insertion Loss        | $\leq 0.3$    | dB               |
| Isolation             | $\geq 20$     | dB               |
| VSWR                  | $\leq 1.2:1$  | --               |
| Operating Temperature | -40 to +85    | $^\circ\text{C}$ |
| Peak Power            | 500           | W                |
| Duty Cycle            | 10%           | -                |
| Connector Type        | WR42          |                  |

**Outline Drawing**



Unit: mm