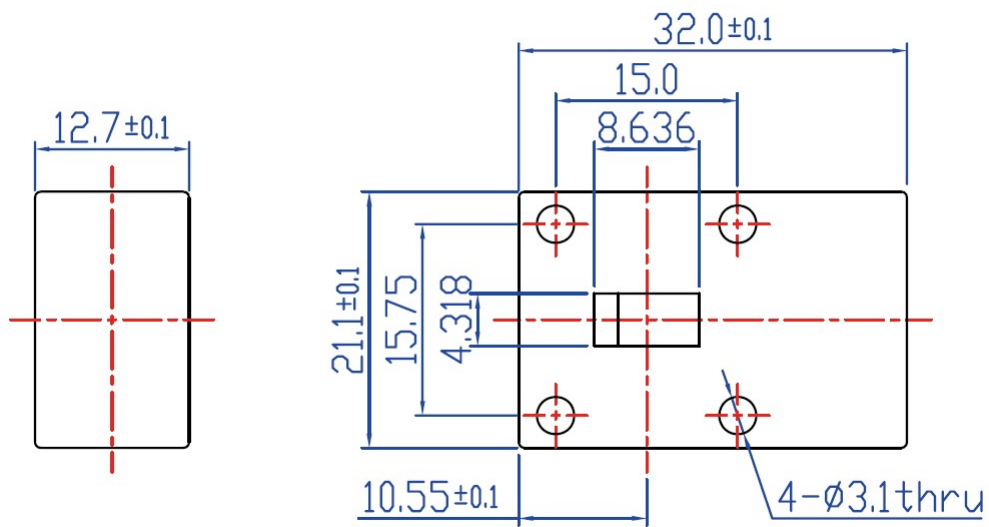


**Electrical Specifications** ( $T_A = +25^\circ\text{C}$ )

Parameter	Specification	Unit
Suitable Frequency	21.7-33.0	GHz
Relative Bandwidth	8%	-
Insertion Loss	$\leq 0.4$	dB
Isolation	$\geq 20$	dB
VSWR	$\leq 1.2:1$	--
Operating Temperature	-40 to +85	$^\circ\text{C}$
Connector Type	WR34	

**Outline Drawing**



Unit: mm