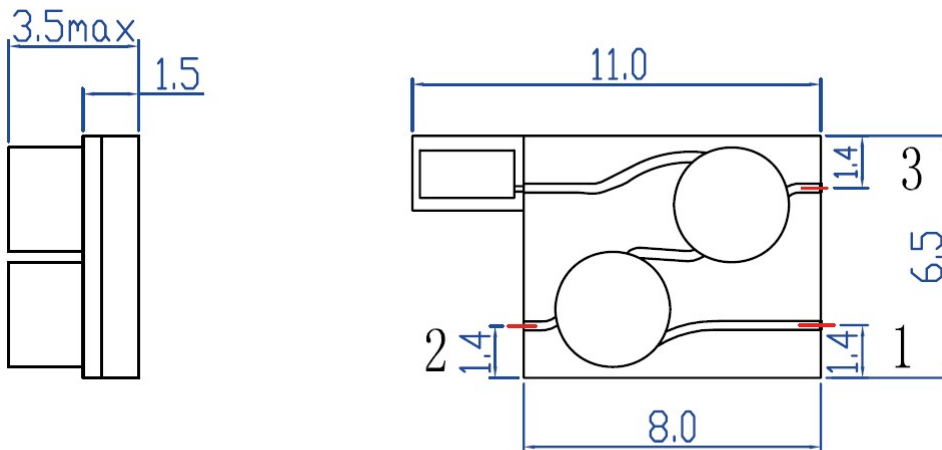


Electrical Specifications ($T_A = +25^\circ\text{C}$)

Parameter	Specification	Unit
Frequency	16.4-17.2	GHz
Insertion Loss	$\leq 0.5(1 \rightarrow 2)$	dB
	$\leq 0.9(2 \rightarrow 3)$	
Isolation	$\geq 23(2 \rightarrow 1)$	dB
	$\geq 23(3 \rightarrow 1)$	
VSWR	$\leq 1.25:1$	--
Operating Temperature	-55 to +85	$^\circ\text{C}$
Load Power	10	W
Connector Type	GWB	

Outline Drawing



Unit: mm