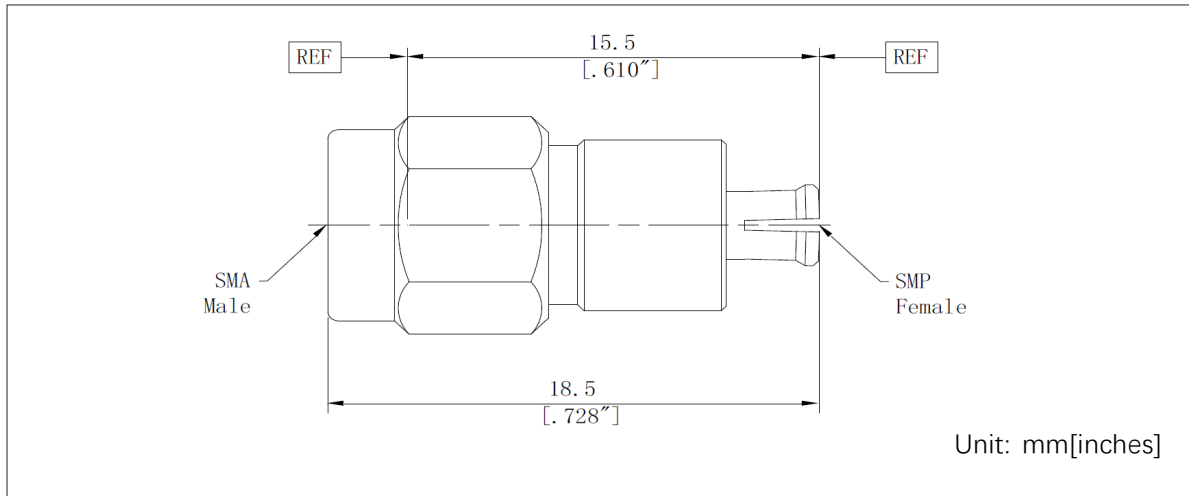


Description: SMP Female To SMA Male Adapter

Outline drawing:



Type

	Connector 1	Connector 2
Port Type	SMP Female	SMA Male
Impedance	50Ω	50Ω
Body Style	Straight	

Material and Plating

Body	SUS303, Polished & Passivated
Center conductor	Beryllium Copper Gold Plated
Dielectric	PEI&PTFE
Nut	Connector 1: N/A; Connector 2: SUS303,Polished & Passivated

Electrical Specifications

Frequency Range	DC-26.5GHz
Max VSWR	1.20:1(max)

Mechanical Specifications

	Connector 1	Connector 2
Durability	> 2000 Cycles	> 2000 Cycles
Recommended Torque	N/A	0.9 Nm

Environmental Data

Operating Temperature Range	-55~+165°C
2002/95/EC(RoHS)	Compliant