

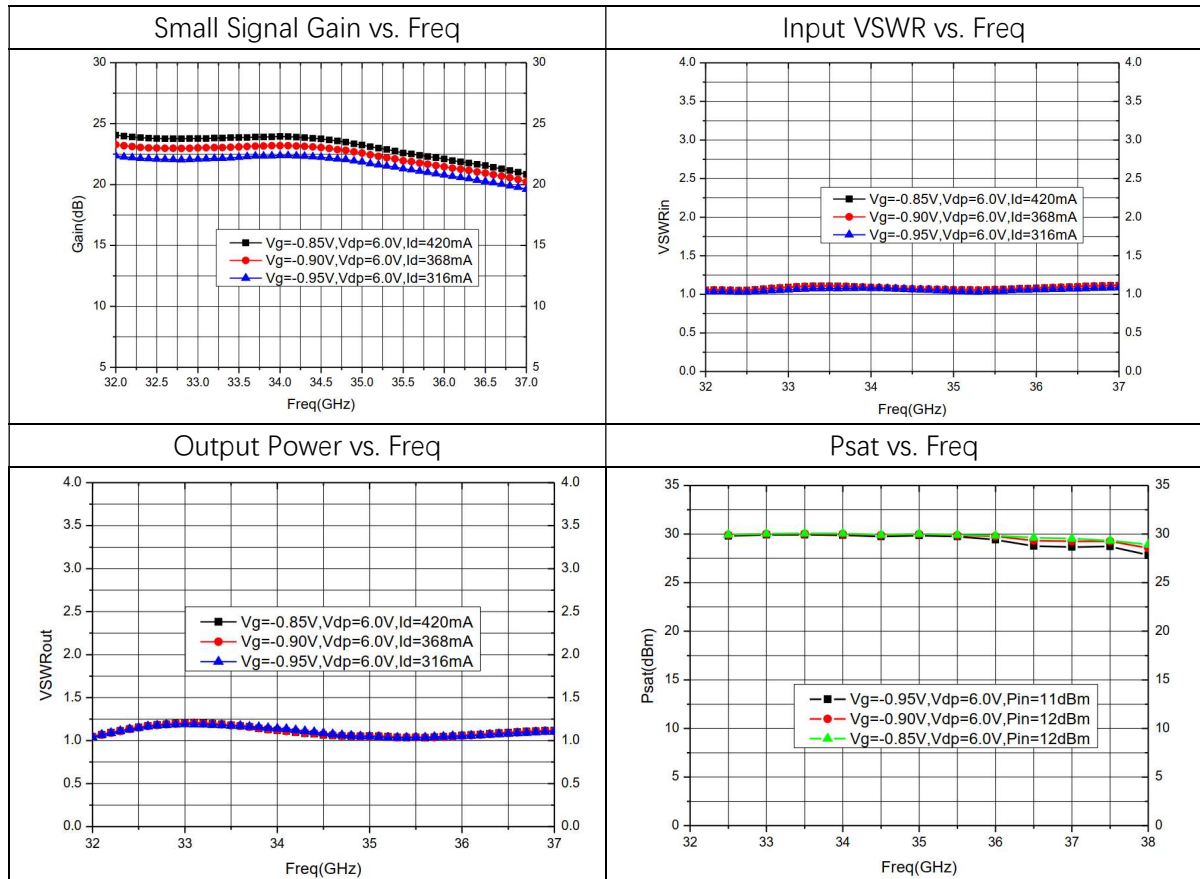
### Performance

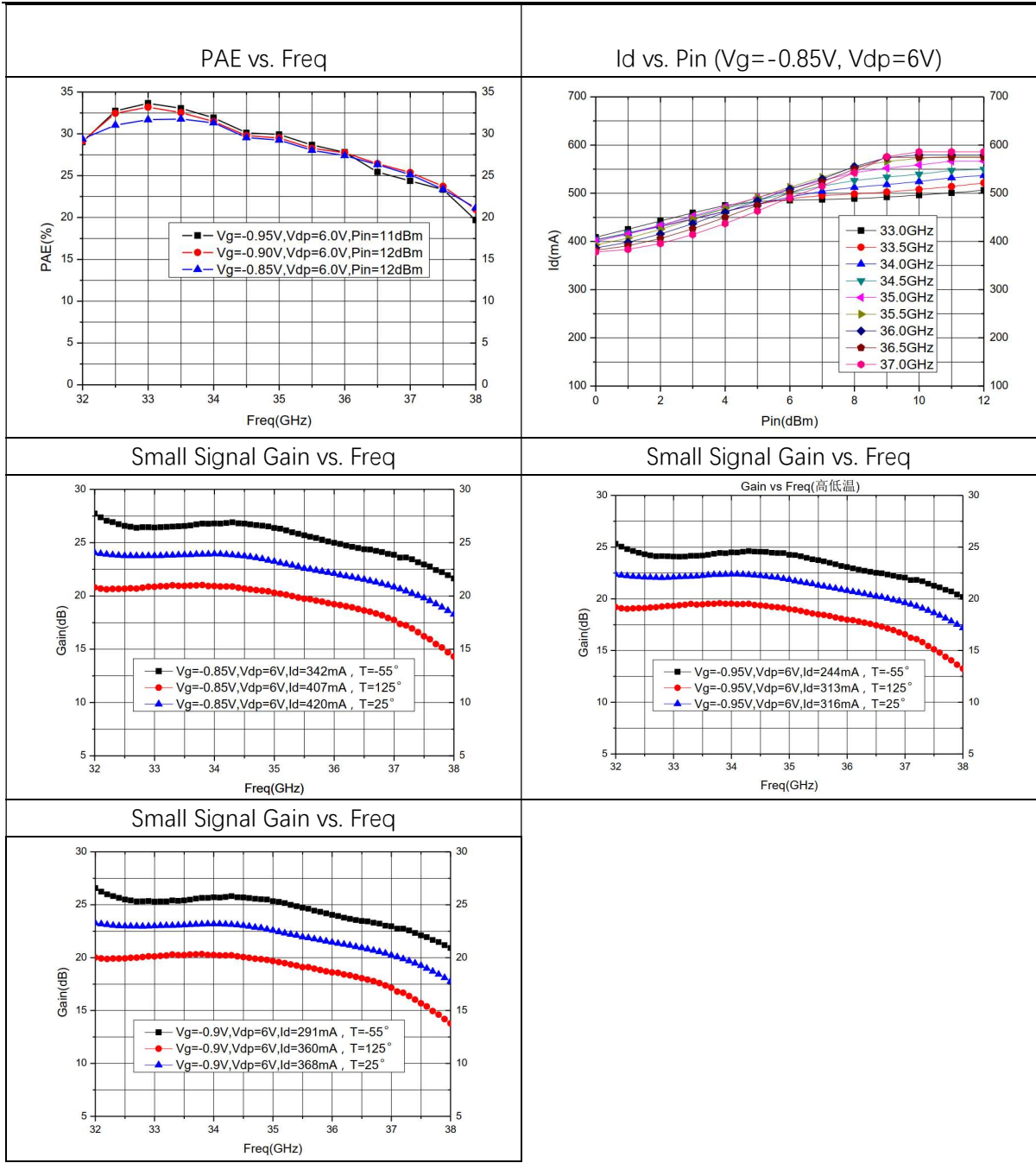
- Frequency: 33-37GHz
- Small Signal Gain: 23dB
- Output Power: 30dBm
- Typical PAE: 30%
- I/O VSWR: 1.1:1/1.2:1
- Size: 3.67\*2.3mm\*0.05mm

### Electrical Specifications (Transmit channel $V_g = -0.85V$ , $V_d = 6V$ , $F: 33-37GHz$ )

Symbol	Parameter	Min	Typical	Max	Unit
G	Small Signal Gain	-	23	-	dB
$\Delta G$	Gain Flatness	-	-2	-	dB
Psat	Saturated Power	-	29	-	dBm
VSWR <sub>in</sub>	Input VSWR	-	1.1	-	
VSWR <sub>out</sub>	Output VSWR	-	1.2	-	
PAE	Power Added Efficiency	-	28	-	%
I <sub>d</sub>	Operating Current	-	420	-	mA

### Test Curves



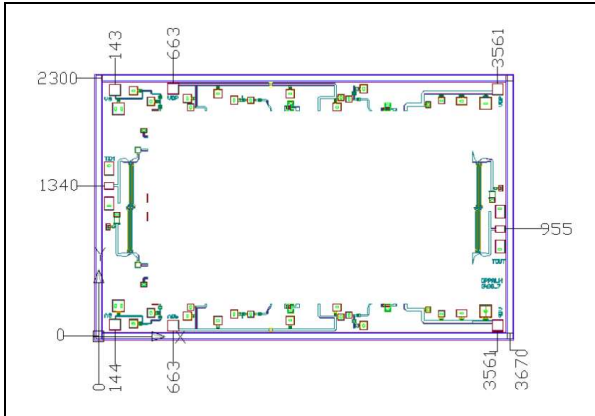


**Absolute Max Ratings ( $T_A = 25^\circ C$ )**

Symbol	Parameter	Value	Remark
Vdp	Drain Voltage	10 V	
Pin	Input Signal Power	20 dBm	
Tch	Channel Temperature	150°C	
Tm	Mounting Temperature	290°C	30s, N2 Protection
Tstg	Storage Temperature	-55~150°C	

Exceeding any one or combination of these limits may cause permanent damage.

**Outline Size**



**Assembly Drawing**

