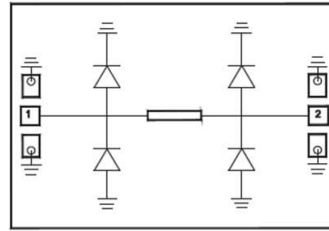


### Performance

- Frequency: 30-38GHz
- Max. Pin: 5W (Pulse, 300us, 10% D.C)
- Typical Insertion loss: 0.9dB
- Limit Power: 22dBm
- VSWR<sub>in/out</sub>: 1.5:1
- Chip size: 0.90\*0.8\*0.1mm

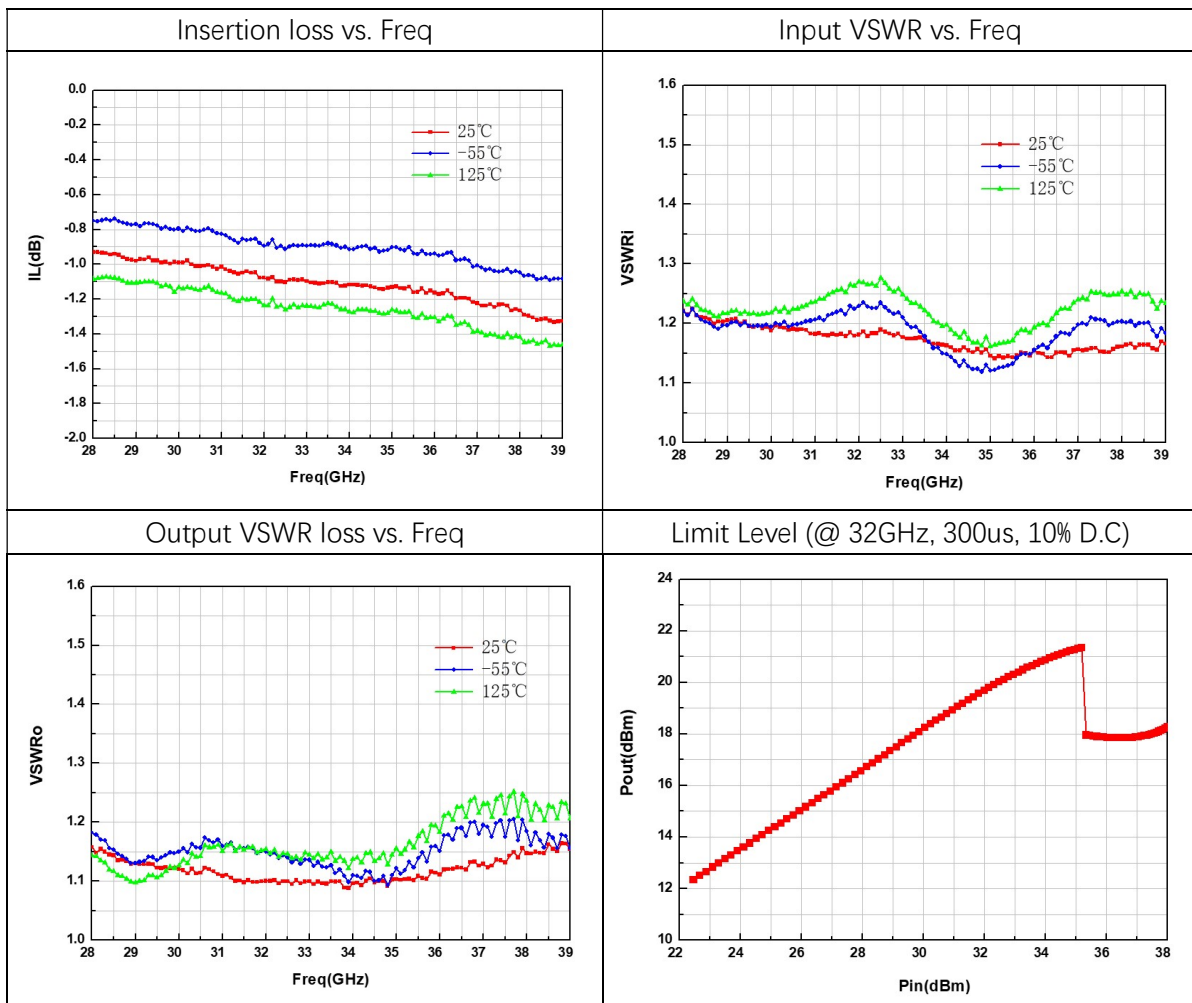
### Function Diagram



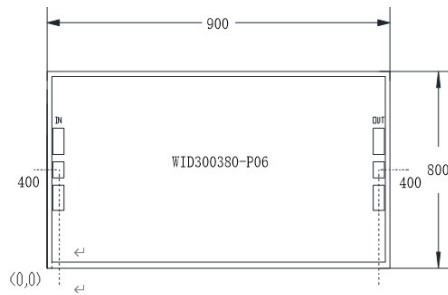
### Electrical Specifications (Ta=+25°C, 50Ω system)

Parameter	Test Condition	Min	Typical	Max	Unit
Small Signal Insertion Loss	Pin=0dBm, 30-38GHz	-	0.9	-	dB
Input VSWR		-	1.5	1.6	-
Output VSWR		-	1.5	1.6	-
Output Power	Pin ≤ 37Bm (300us, 10% D.C)	-	22	-	dBm

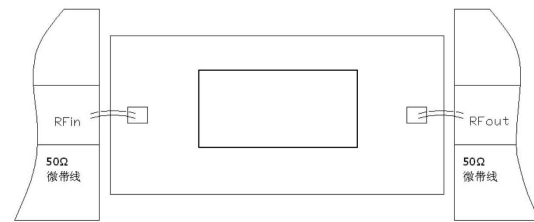
### Test Curves



### Outline Size



### Assembly Drawing



### Absolute Max Ratings

Input Signal Power	37 dBm	Pulse, 300us, 10%
Mounting Temperature	290°C	1min, N <sub>2</sub> protection
Storage Temperature	-55~ +150°C	

**Exceeding any one or combination of these limits may cause permanent damage**

