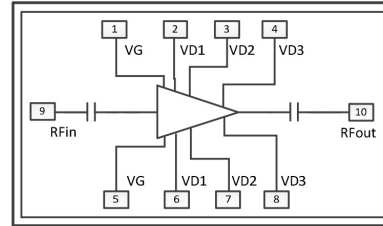


Performance

- Frequency: 30-40GHz
- Typical Small Signal Gain: 23.5dB
- Typical Output Power: 19.5dBm
- Typical Current: 150mA
- Bias Voltage & Current: 5V, -0.8V
- Size: 2.6*1.0mm*0.05mm

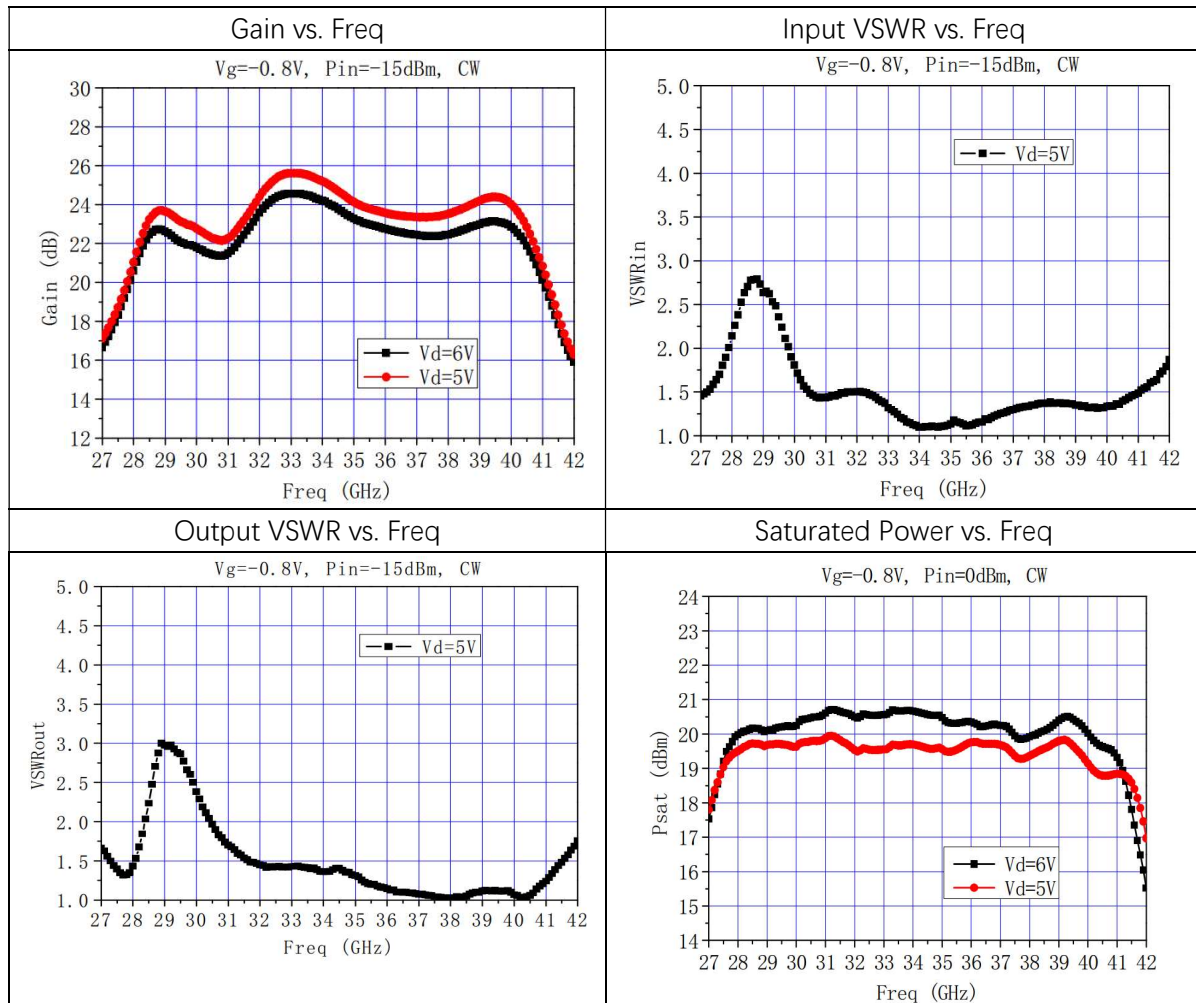
Function Schematic

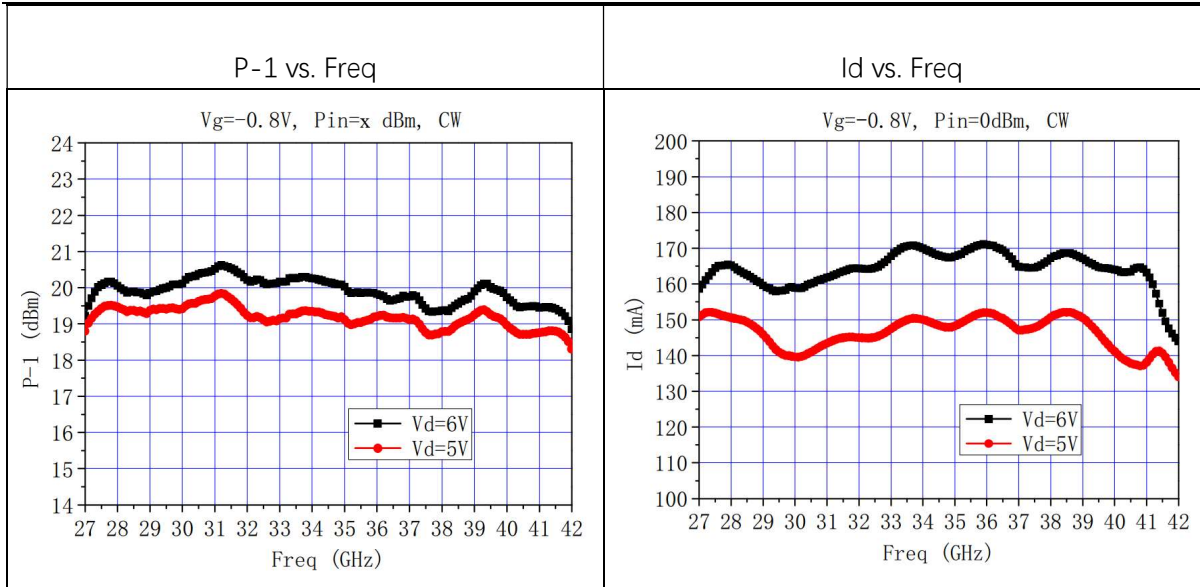


Electrical Specifications (Vd=5V, Vg=-0.8V, Freq=30-40GHz)

Symbol	Parameter	Min	Typical	Max	Unit
G	Small Signal Gain	-	23.5	-	dB
Gp	Power Gain	-	19.5	-	dB
Psat	Saturated Power	-	19.5	-	dBm
Id	Power Added Efficiency	-	150	-	mA

Test Curves



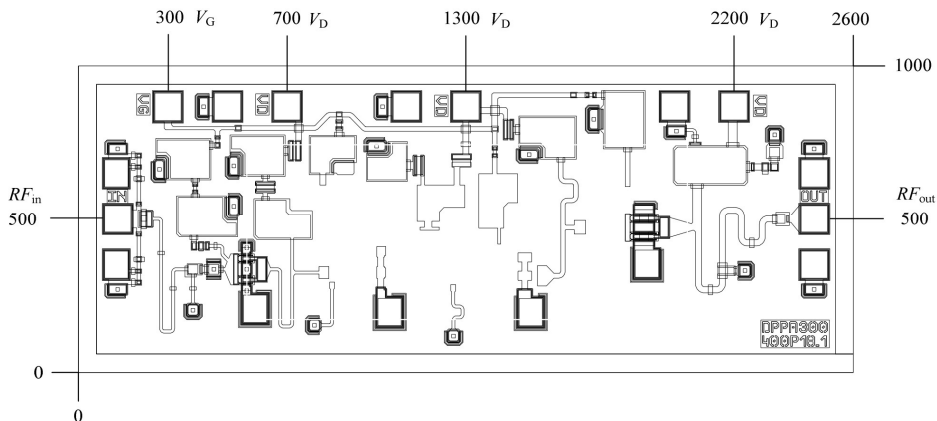


Absolute Max Ratings (TA=25°C)

Symbol	Parameter	Value	Remark
Vd	Drain Voltage	7V	
Id	Drain Current	0.4A	
Vg	Gate Voltage	-2V	
Ig	Gate Current	10mA	
Pd	DC Power Consumption	2.8W	
Pin	Input Power	10dBm	
Tch	Channel Temperature	150°C	
Tm	Mounting Temperature	300°C	1 min, N2 Protection
Tstg	Storage Temperature	-55~150°C	

Exceeding any one or combination of these limits may cause permanent damage.

Outline Size (mm)



Assembly Diagram

