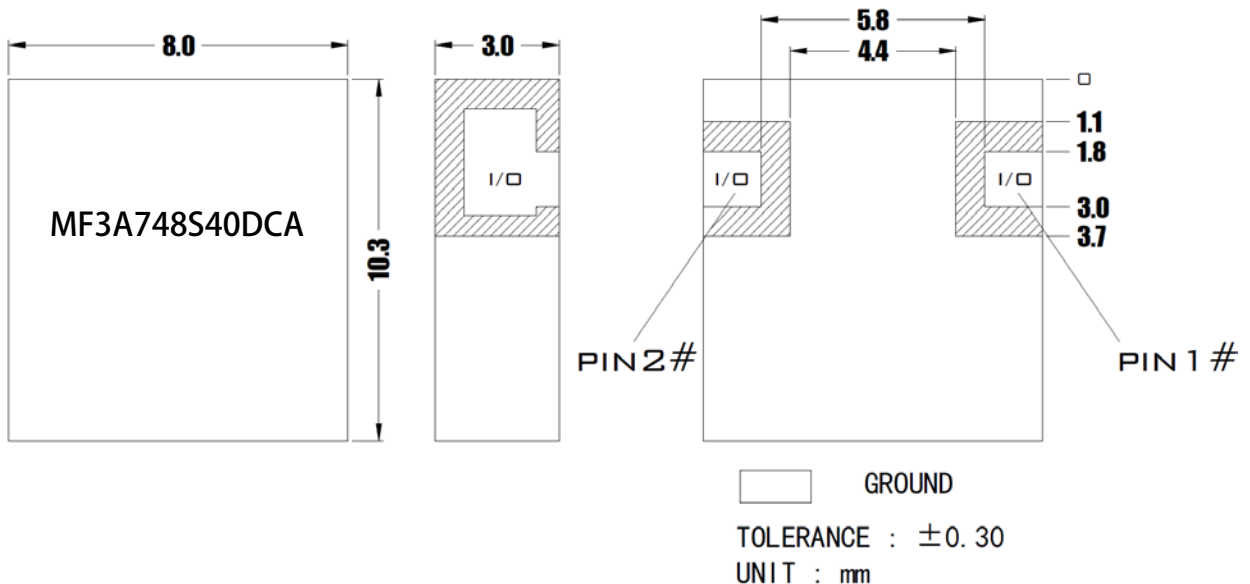


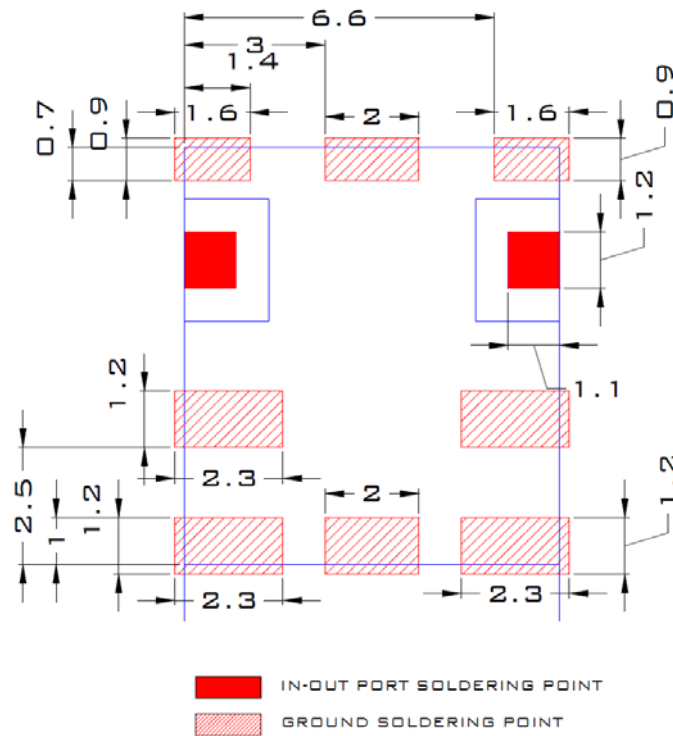
Electrical Specification

Parameter	Specification	Unit
Center Frequency	748	MHz
Bandwidth (BW)	$F_0 \pm 20 [728 \sim 768]$	MHz
Insertion Loss in BW	2.2 max.	dB
Ripple in BW	0.2 max.	dB
Return Loss in BW	15 min.	dB
Attenuation (Absolute Value)	15 min.@600~678 MHz	dB
	15 min.@818~900 MHz	
	25 min.@1000~1500 MHz	
	10 min.@1500~1550 MHz	
	3 min.@1800~1930 MHz	
	40 min.@100~350 MHz	
Impedance	50	ohm
Input Power	3 max.	W
Operating Temperature	-40 to +85	°C

Outline Drawing



Recommended PCB Layout



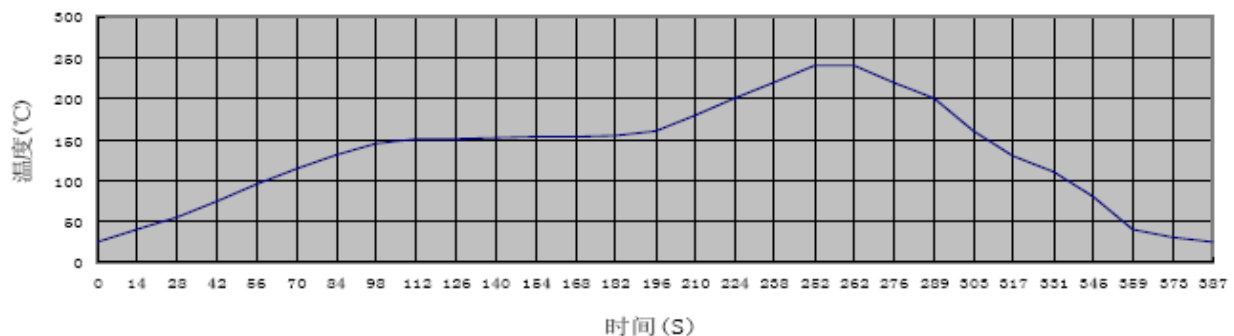
Remarks: Recommend to use silver-containing solder paste

Application Instructions:

1. Recommended Soldering Temperature

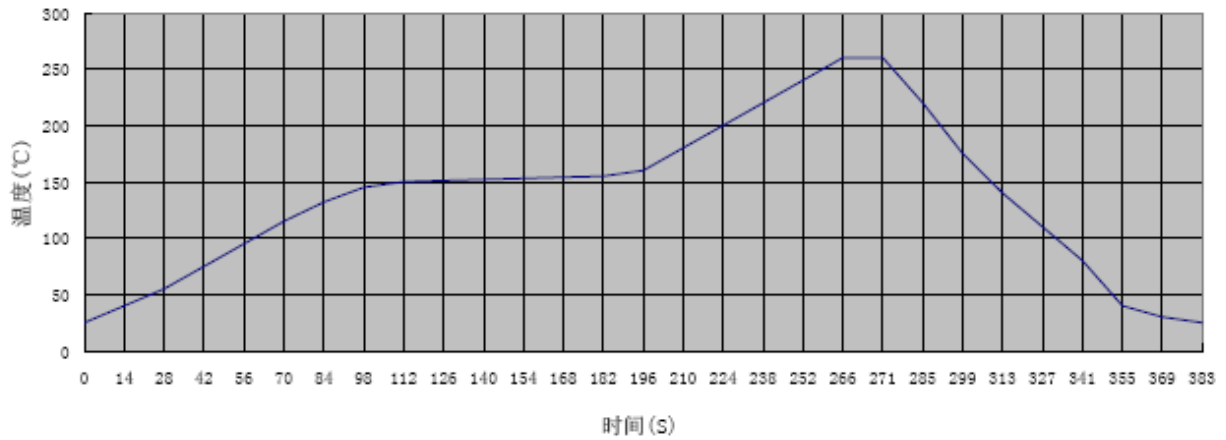
a. Containing Pb Soldering,

Recommend the solder paste of melting points 183°C, soldering temperature won't exceed 230°C. Refer to the below reflow soldering profile.

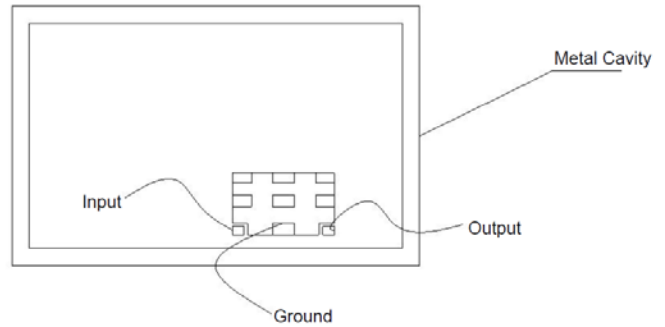
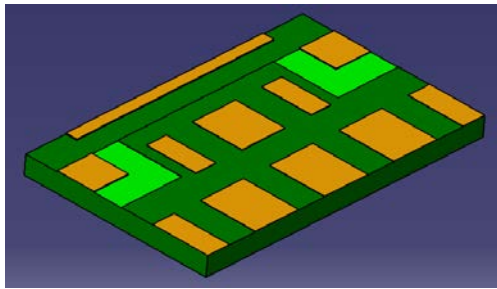


b. Pb-free soldering

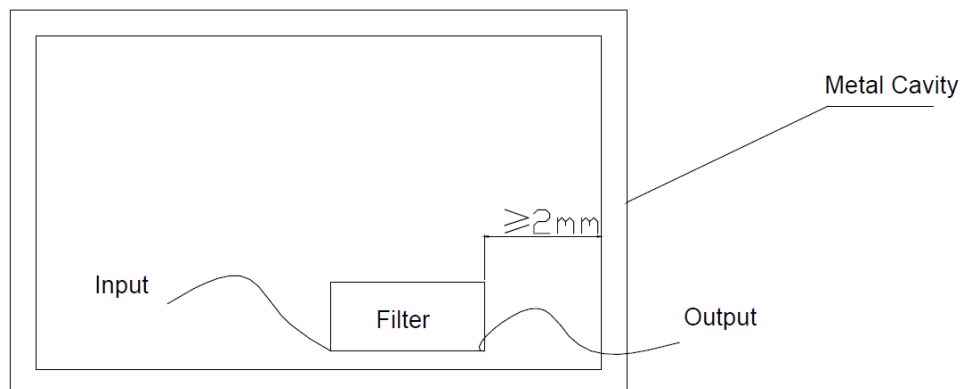
Recommend the solder paste of melting point 217°C, soldering temperature won't exceed 260°C. Refer to the below reflow soldering profile.



- PCB layout for soldering the filter should be designed in grid pattern. Refer to recommended PCB Layout for more details. Soldering Area is 50%-70% of ground area of this filter.



- This filter should be soldered 2mm (at least) away from metal cavity, in order to avoid degrading filter's performance by metal cavity. Refer to the below figure.



- It would achieve better performance that the top of the filter is grounded too.
- Mounting screws around the filter should be 1cm away from the filter.
- To avoid PCB transformation during mounting the filter.
- If customer will solder PCB of the filter on Aluminum plate, please contact us directly.