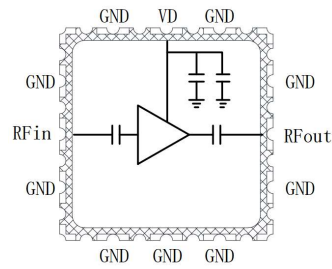


Performance

- Frequency: 8~12GHz
- Typical Signal Gain: 15dB
- Typical Pout: 23dBm
- Bias: 8V
- Technology: 0.25um HEMT
- Package: Metal Ceramic JC32F005
- Size: 5.02*5.02mm*1.25mm

Function Diagram

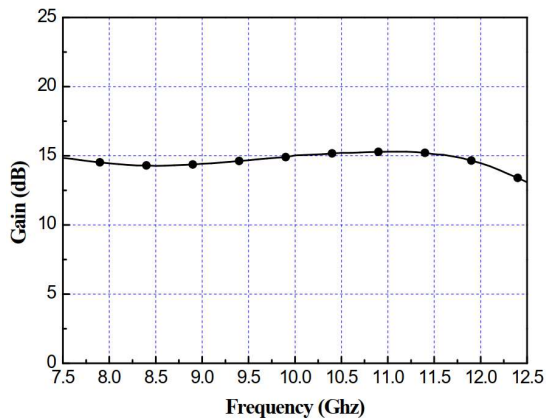


Electrical Specifications (TA=25°C, Vd=8V, F: 8~12GHz)

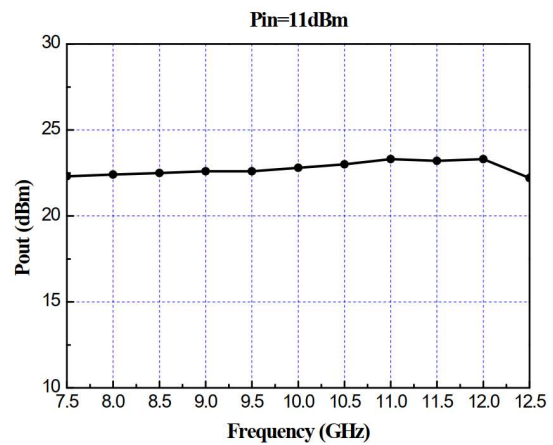
Symbol	Parameter	Min	Typical	Max	Unit
Gain	Linear Gain		15		dB
Pout	Saturated Power		23		dBm
VSWRin	Input VSWR		1.5	2	
VSWRout	Output VSWR		1.5	2	
Id	Operating current		104		mA

Test Curves (TA=25°C, F=7.5~12.5GHz)

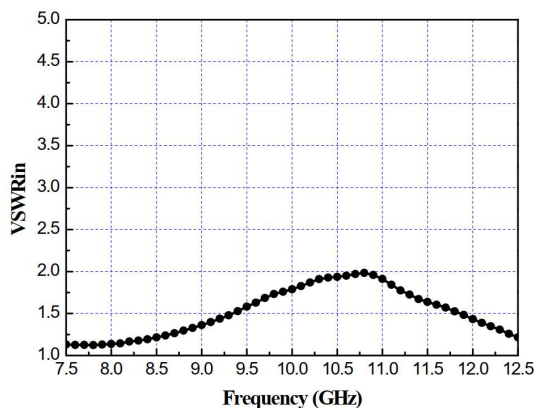
Small Signal Gain vs. Freq



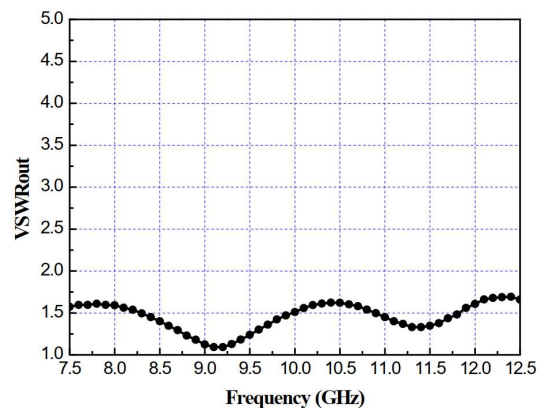
Output Power vs. Freq



VSWRin vs. Freq



VSWRout vs. Freq

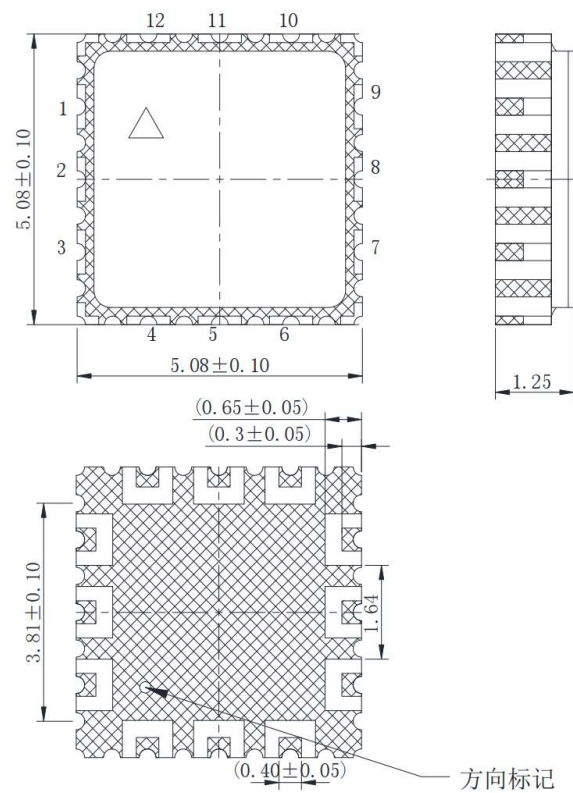


Absolute Max Ratings (TA=25°C)

Symbol	Parameter	Value	Remark
Vd	Control Voltage	9V	
Pin	Input Power	18dBm	
Tm	Mounting Temperature	280°C	30s, N2 Protection
Tch	Channel Temperature	190°C	
Tstg	Storage Temperature	-55~190°C	

Exceeding any one or combination of these limits may cause permanent damage.

Outline Drawing



Pads Definition

Number	Symbol	Description	Number	Symbol	Description
1	GND	Ground	7	GND	Ground
2	RFin	RF input	8	RFout	RF output
3	GND	Ground	9	GND	Ground
4	GND	Ground	10	GND	Ground
5	GND	Ground	11	VD	Supply +8V
6	GND	Ground	12	GND	Ground