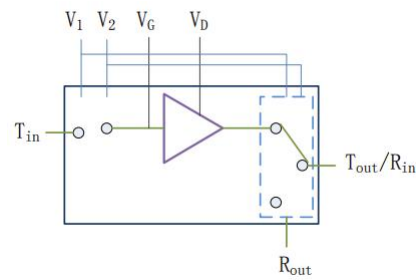


### Performance

- Frequency: 6~18GHz
- Typical Signal Gain: Mode 1: 24.6dB
- Typical Pout: Mode 1: 36dBm@28V
- Typical PAE: Mode 1: 25%
- Bias: Mode 1: Idq=0.38A@-1.8Vg
- Technology: 0.20um HEMT
- Size: 3.3\*2.5mm\*0.08mm

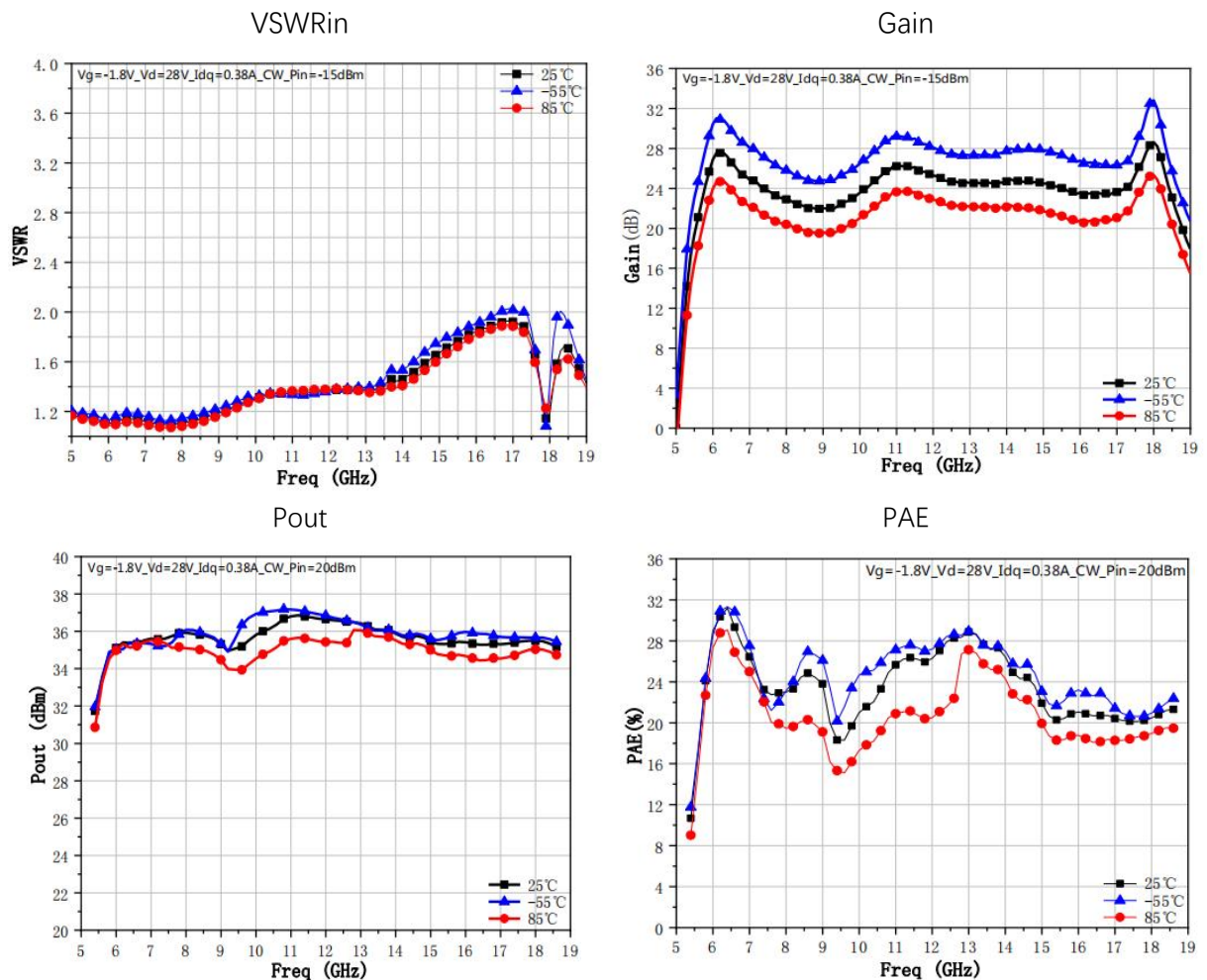
### Function Diagram

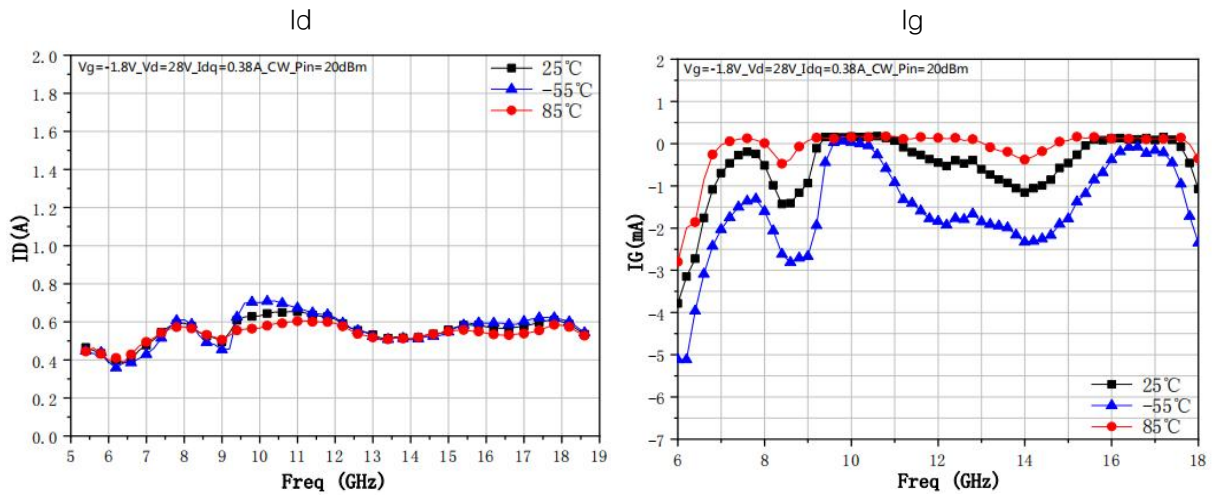


### Electrical Specifications (Mode 1: TA=25°C, Vd=28V, Idq=0.38A, F: 6~18GHz, CW)

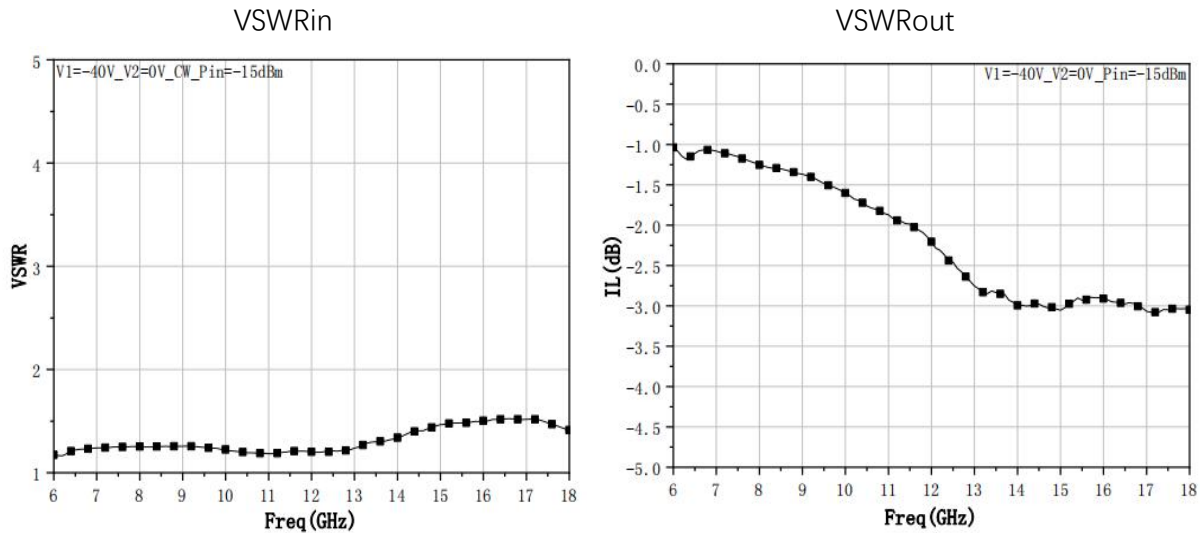
Symbol	Parameter	Min	Typical	Max	Unit
G	Small Signal Gain	-	24.6	-	dB
Gp	Power Gain	-	15	-	dB
Pout	Saturated Power	-	36	-	dBm
PAE	Power Added Efficiency	-	25	-	%

### Test Curves (Transmitting Channel)





**Test Curves (Receiving Channel)**



**Absolute Max Ratings (TA=25°C)**

Symbol	Parameter	Value	Remark
Vd	Drain Voltage	32V	
Id	Drain Current	Mode 1: 0.7A	
Vg	Gage Voltage	Mode 1: -10V	
Pd	DC Power	Mode 1: 30W	25°C
Tch	Channel Temperature	225°C	
Tstg	Storage Temperature	-55~175°C	
Tm	Mounting Temperature	300°C	1 min, N2 Protection
Tc	Operating Temperature	-55~150°C	

Exceeding any one or combination of these limits may cause permanent damage.

