

Features

RF SAW filter for mobile telephone Band 12/ 13/ 14/67 system, receive path (Rx)

- Suitable for diversity applications
- Unbalanced to unbalanced operation
- Low Insertion Loss
- Narrow and sharp pass band characteristics. RoHS compatible
- Package for Surface Mount Technology(SMT)
- Package size 1.1mm*0.9mm

Electrical Specification

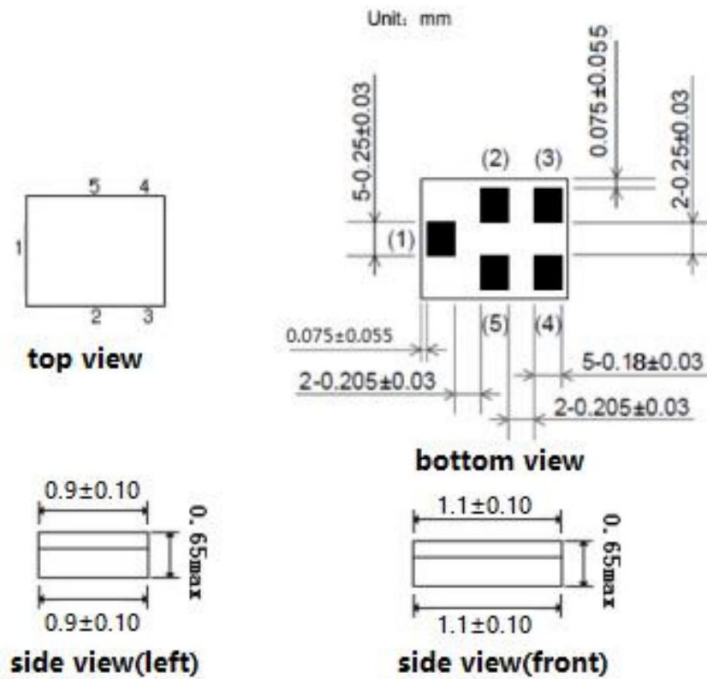
ITEM		Min.	Typ.	Max.	Unit
Center Frequency			748.5		MHz
Insertion Loss	729~746MHz		1.2	1.9	B
Insertion Loss	738~758MHz		1.2	1.4	B
Insertion Loss	746~756MHz		1.2	1.4	B
Insertion Loss	758~768MHz		1.2	1.8	B
Passband Ripple	729~746MHz		0.5	1.2	
Passband Ripple	738~758MHz		0.5	0.9	B
Passband Ripple	746~756MHz		0.5	0.9	
Passband Ripple	758~768MHz		0.3	1.1	
Attenuation	10~384MHz	35	40		B
Attenuation	384~699MHz	35	40		B
Attenuation	699~716MHz	30	38		B
Attenuation	788~805MHz	18	23		B
Attenuation	1427.9~1462.9MHz	43	46		B
Attenuation	1710~1785MHz	40	46		B
Attenuation	1920~1980MHz	40	46		B
Attenuation	1980~2500MHz	40	46		B
Attenuation	2500~6000MHz	40	46		B
VSWR	729~768MHz		1.7	2.0	

Maximum Ratings

Rating	Symbol	Value	Unit
DC Voltage (between any Terminals)	V_{DC}	3	V
RF Power (in BW)	P	15 dBm /2000hr	
Operating Temperature Range	T_A	-20 ~ +85	°C
Storage Temperature Range	T_{stg}	-40 ~ +85	°C
ESD Voltage (HB)	V_{ESD}	>150	V
Moisture Sensitivity Levels	MSL	3	

Outline Drawing

Unit: mm

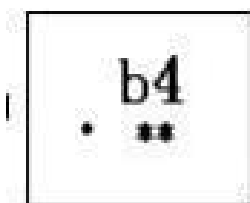


Pin Configuration

PIN#	Description
1	Input
4	Output
2,3,5	Ground



Marking



Top View, Laser Marking

- “b4”: Part Number
- “.” Dot marking, indicates input
- “1”: Terminal 1

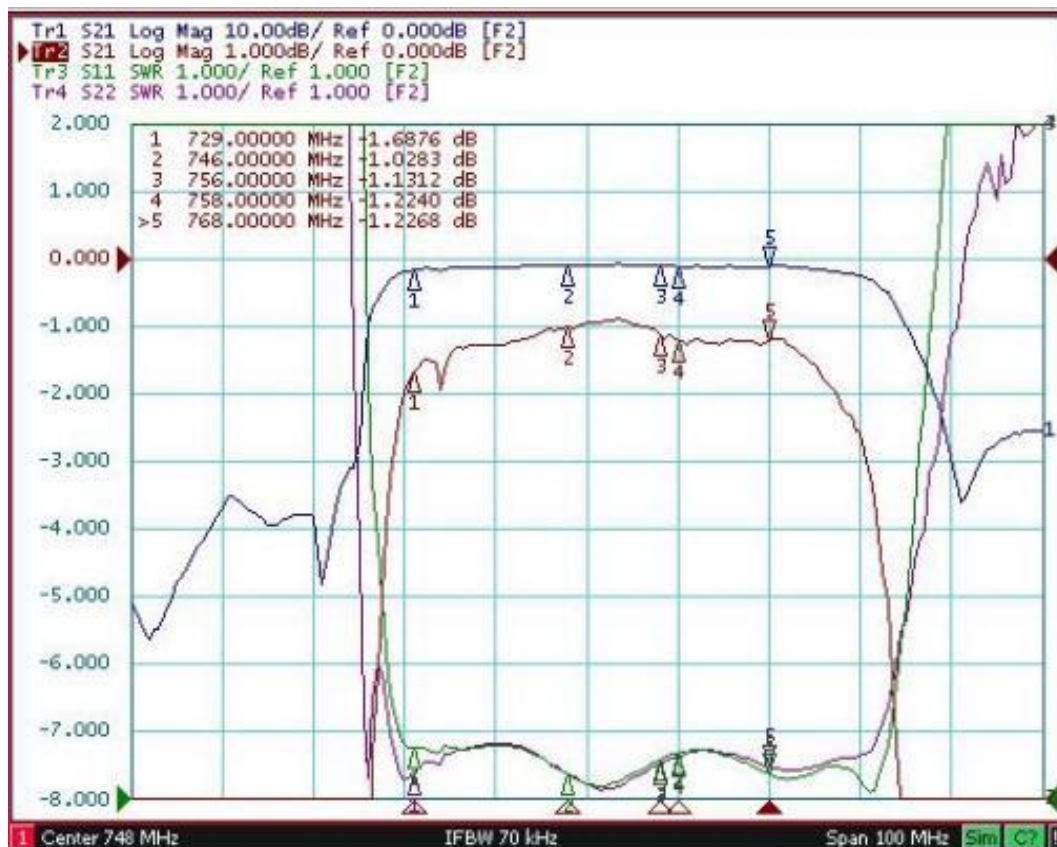
The first “*”: Month Code (The code shown below varies in a 4-year-cycle)

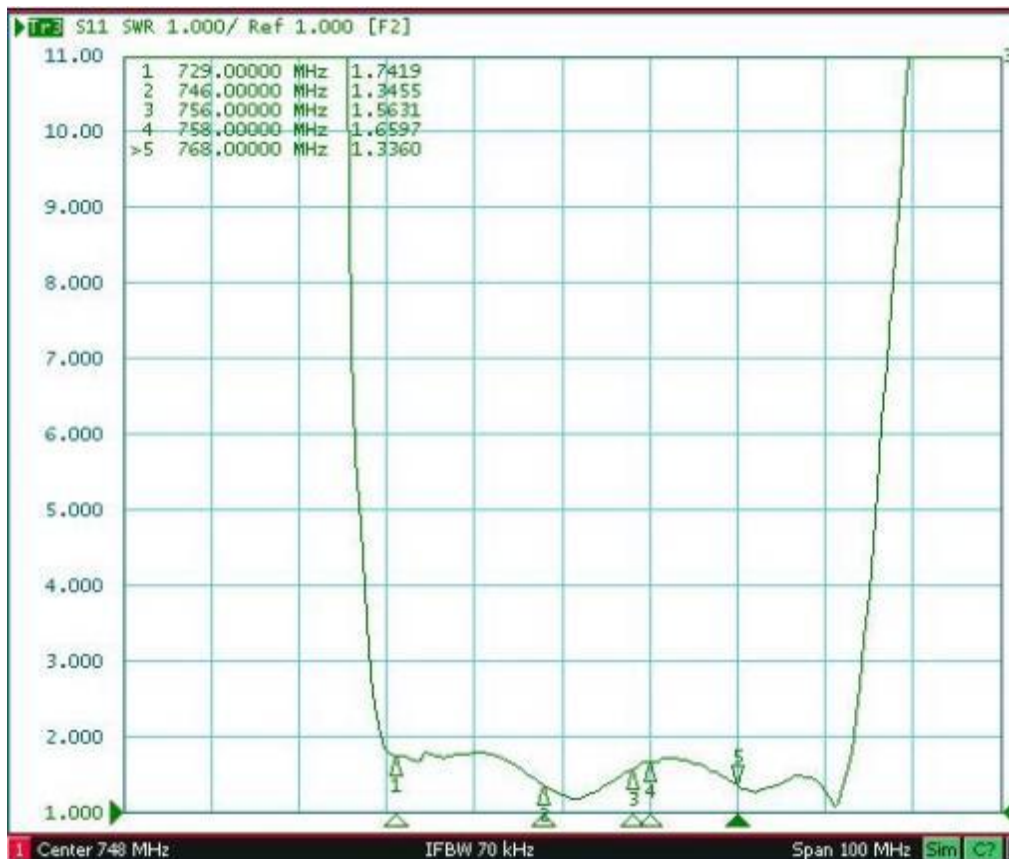
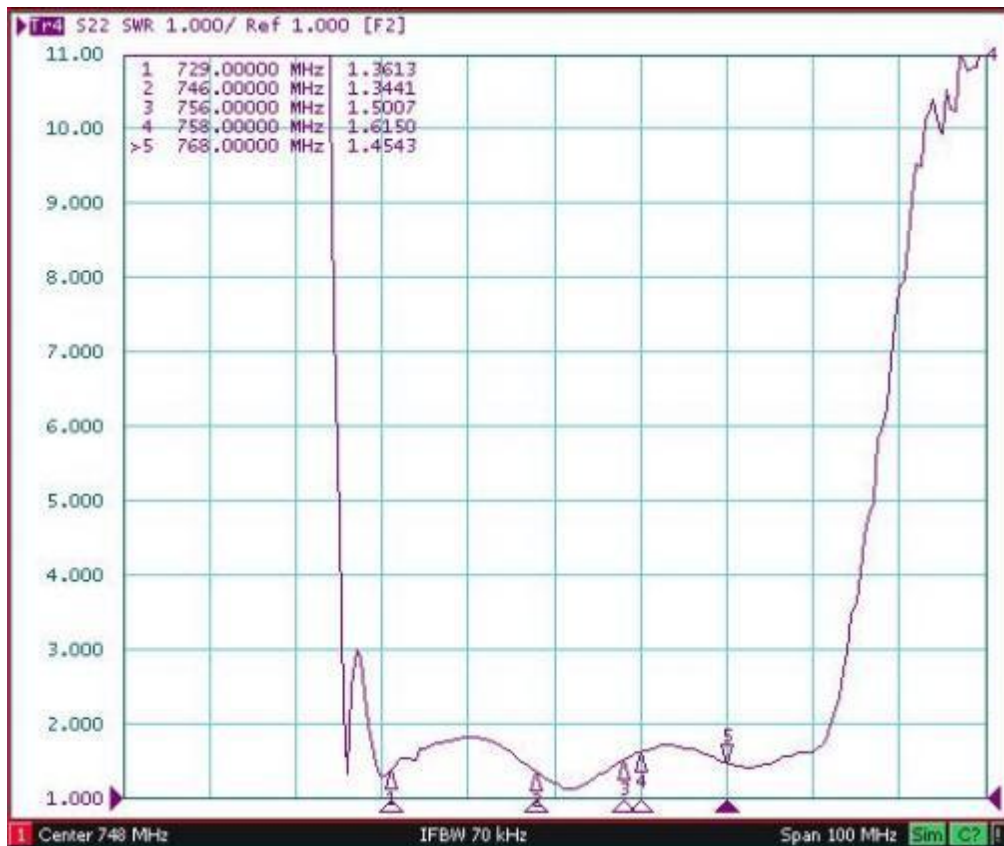
Month	1	2	3	4	5	6	7	8	9	10	11	12
2016/2020	n	p	q	r	s	t	u	v	w	x	y	z
2017/2021	A	B	C	D	E	F	G	H	J	K	L	M
2018/2022	N	P	Q	R	S	T	U	V	W	X	Y	Z
2019/2023	a	b	c	d	e	f	g	h	i	j	k	m

The second “*”: Date Code

Date	1st	2nd	3rd	4th	5th	6th	7th	8th	9th	10th	
Code	A	B	C	D	E	F	G	H	J	K	
Date	11th	12th	13th	14th	15th	16th	17th	18th	19th	20th	
Code	L	M	N	P	Q	R	S	T	U	V	
Date	21st	22nd	23rd	24th	25th	26th	27th	28th	19th	30th	31st
Code	W	X	Y	Z	a	b	d	e	f	g	h

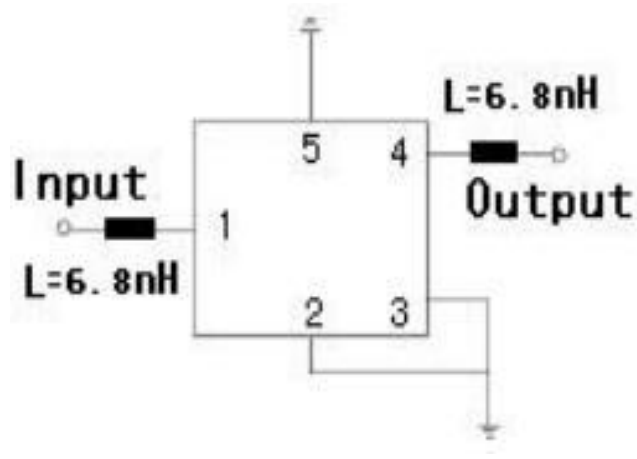
Typical Frequency Response







Test Circuit



Stability Characteristics

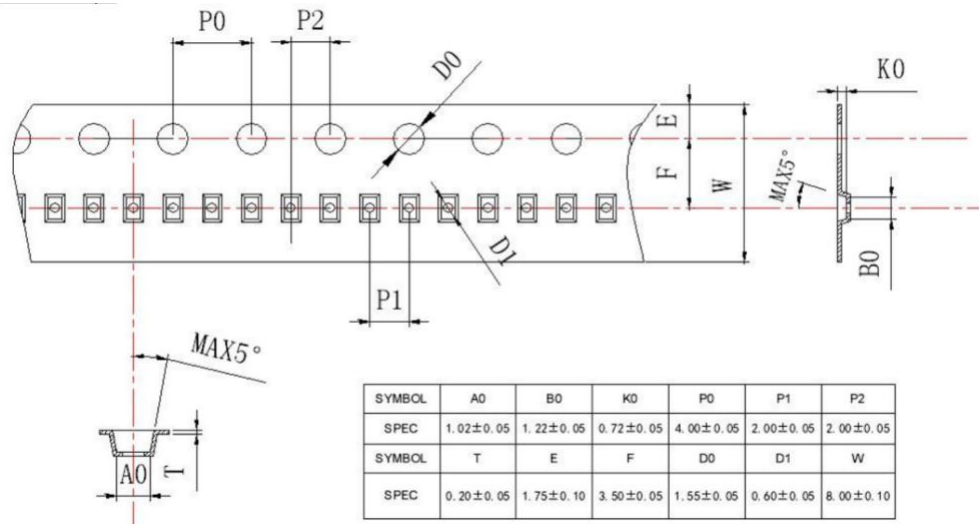
ITEM	Test Item	STD Reference	Test Conditions	per lot
	Preconditioning	JESD22-A113	1) Temperature Cycling, 5 cycles -40°C to 85°C; 2) Bake, 24 hrs @85±5°C; 3)Moisture Soak, Soak time and conditions per IPC/JEDEC J-STD-020 based on device MSL level; 4) Reflow, 3 reflow cycles; 5) Drying, Room ambient temperature.	All behind
1	Temperature Cycling	JESD22-A104	-40°C / +85°C ,5°C/min, 15min dwell, < 1 min transfer time,500cycles	3*25 pcs
2	High Temperature Storage	JESD22-A103	Temperature = 85°C, 1000 hours.	3*25 pcs
3	Temperature Humidity no bias	JEDEC Std A101-B	85°C 85%RH 240 hours	3*25 pcs
4	Human Body Mode ESD	JESD22-A114	Ta=25°C, ≥100V	3 pcs
5	Charge Device Mode ESD	JESD22-C101	Ta=25°C, ≥100V	3 pcs
6	Solderability	JESD22-B102	Wetting: 245°C, 5s.	22 pcs
7	Drop Test	JESD22-B111	1500 Gs, 0.5 millisecond duration, half-sine pulse.	20 pcs
8	Mechanical Shock	JESD-47	Shock pulse of 1500g with pulse duration of 0.5+/-0. 1msec (X ,Y & Z); 5 shocks per axis.	3*25 pcs

Remarks

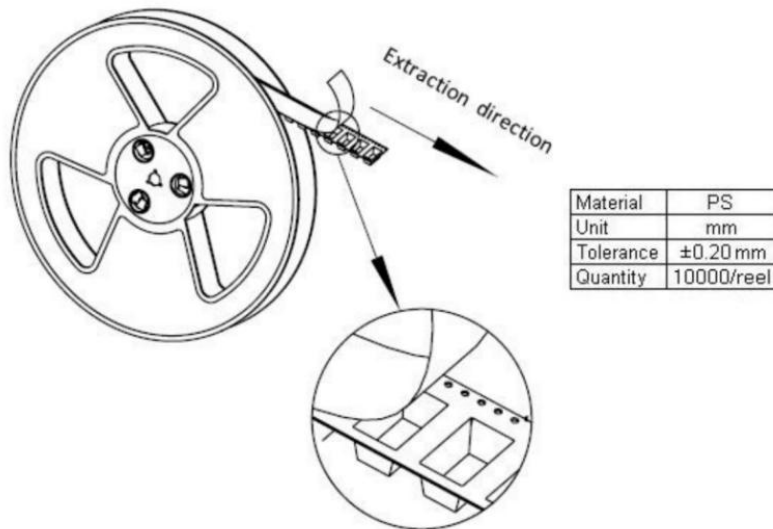
- SAW devices should not be used in any type of fluid such as water, oil, organic solvent, etc.
- Be certain not to apply voltage exceeding the rated voltage of components.
- Do not operate outside the recommended operating temperature range of components.
- Sudden change of temperature shall be avoided, deterioration of the characteristics can occur.
- Be careful of soldering temperature and duration of components when soldering.
- Do not place soldering iron on the body of components.
- Be careful not to subject the terminals or leads of components to excessive force.
- SAW devices are electrostatic sensitive. Please avoid static voltage during operation and storage.
- Ultrasonic cleaning shall be avoided. Ultrasonic vibration may cause destruction of components.

Packing Information

Carrier Tape



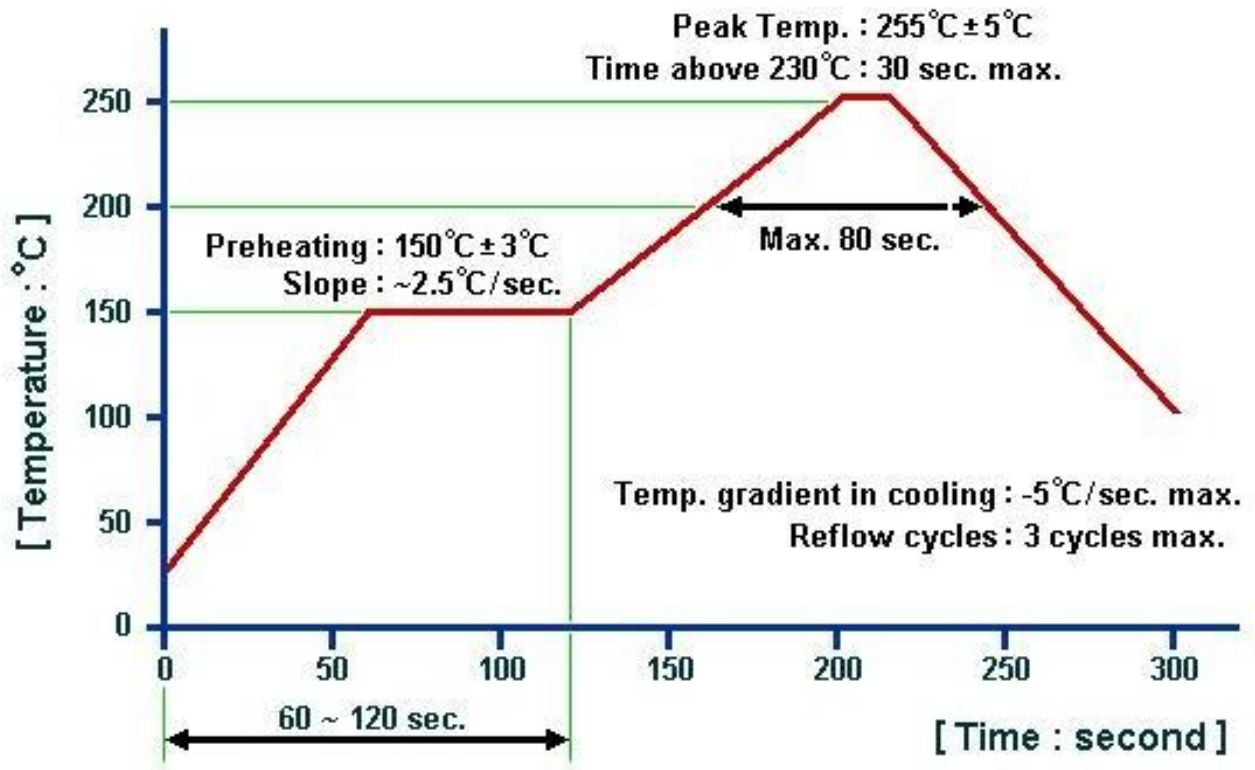
Reel Dimensions



Outer Packing

Type	Quantity	Dimension	Description	Weight
Carton Box I	100000	240×210×285mm	anti-static plastic bag & carton box 1 reel / bag 10 bags / box (100000pcs)	2.15kg
Carton Box II	300000	470×310×285mm		6.22kg

Recommended Soldering Profile



Remarks:

1. The specifications of this device are subject to change or obsolescence without notice.
2. Typically, equipment utilizing this device requires emissions testing and government approval, which is the responsibility of the equipment manufacturer.
3. Our liability is only assumed for the Surface Acoustic Wave (SAW) component(s) per se, not for applications, processes and circuits implemented within components or assemblies.
4. For questions on technology, prices and delivery, please contact our sales offices or e-mail sales@sainty-tech.com.